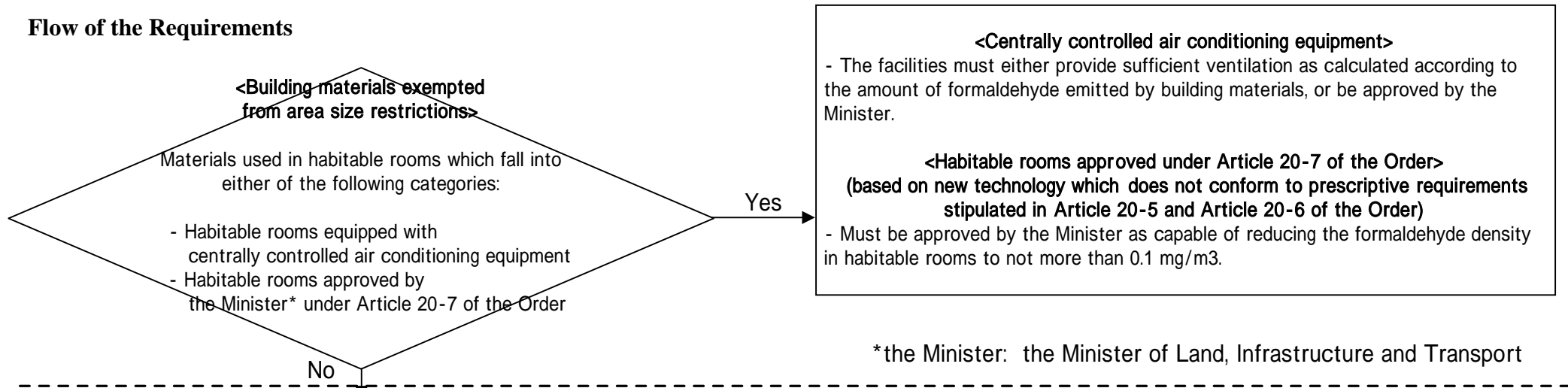
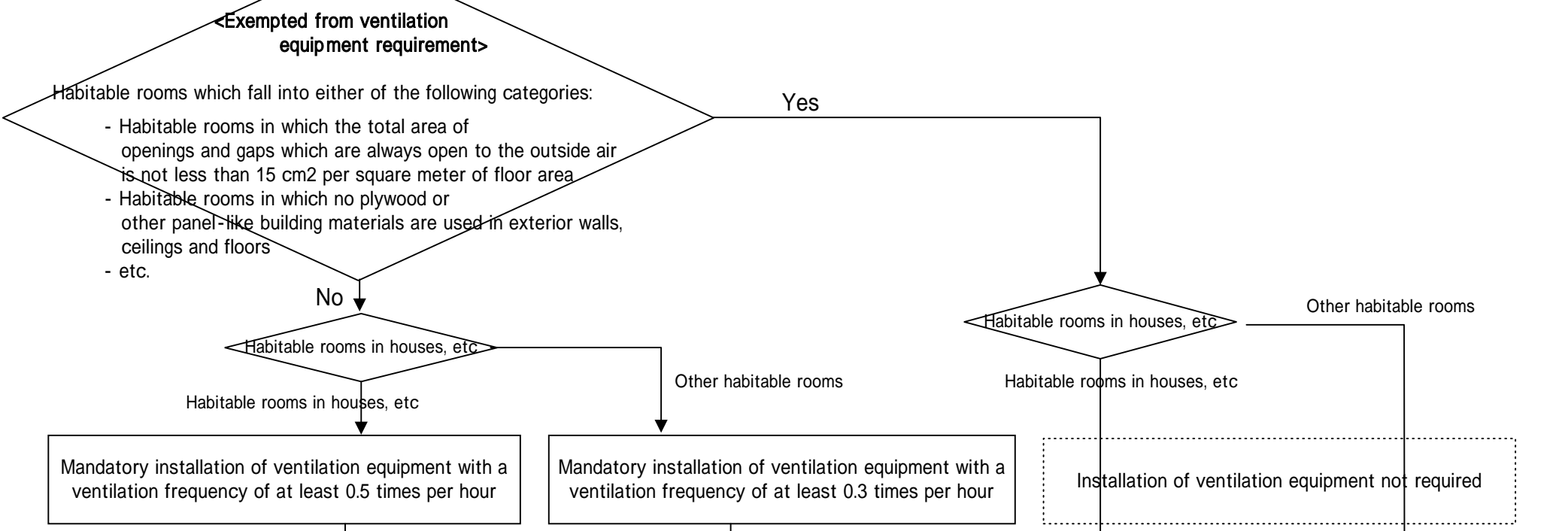


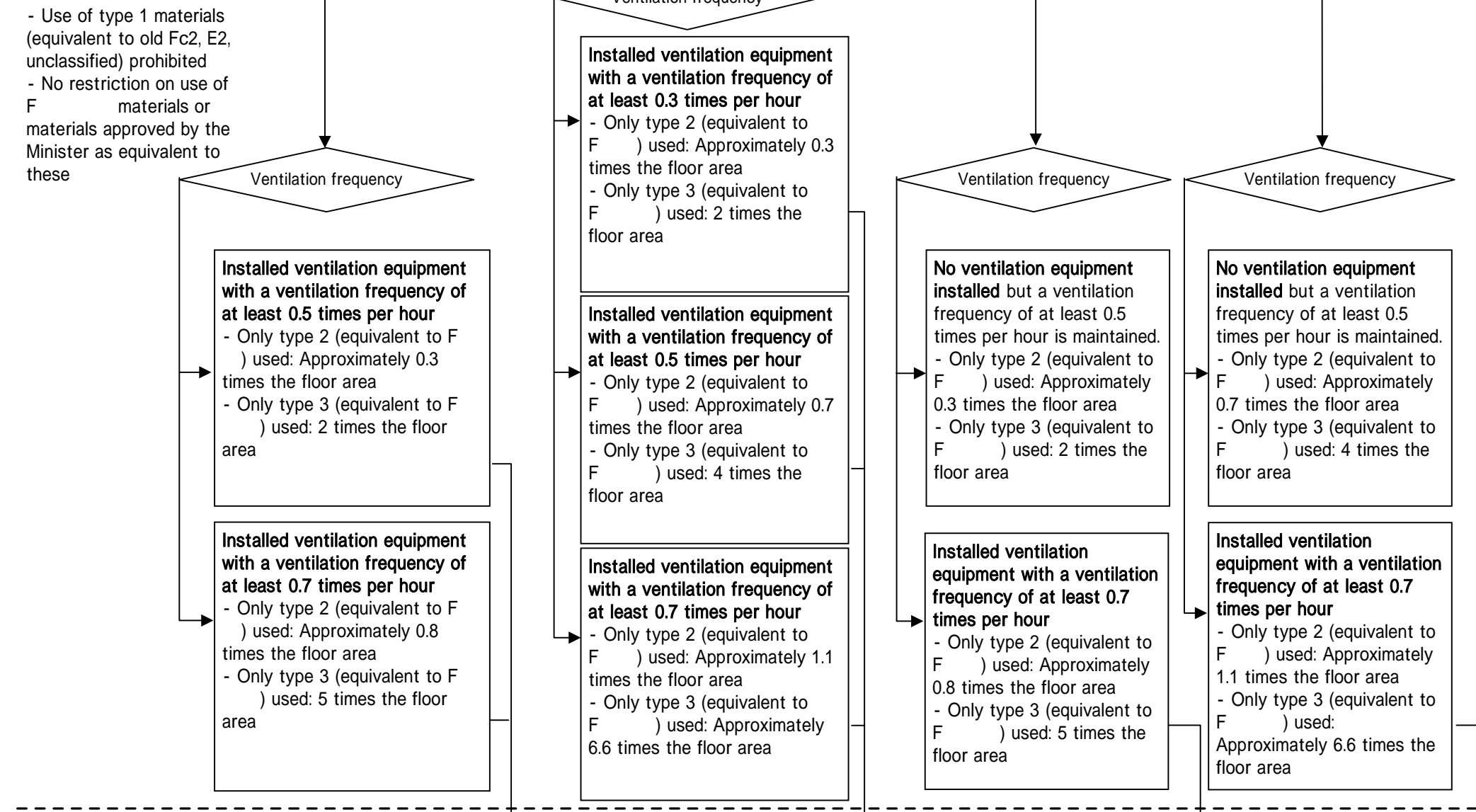
**Flow of the Requirements**



**Ventilation equipment**



**Interior finishing materials (area size restrictions)**



**Ceiling cavity, etc**

Measures based on building materials	Measures based on airtight layers or air seals		Measures based on ventilation equipment		
- Type 1 and type 2 materials not used as base materials, etc., in ceiling cavities, etc.	Areas with an airtight layer (specified as notification under the Energy Conservation Law, or with equivalent or better performance) between ceiling cavities, etc., and habitable rooms	Areas with air seals made from plywood, etc., between partition walls and ceilings and floors	- Where type 1 ventilation equipment is installed in habitable rooms, habitable room pressure shall be higher than that of ceiling cavities, etc	- Type 2 ventilation equipment shall be installed in habitable rooms.	- Where type 3 ventilation equipment is installed in habitable rooms, ceiling cavities, etc. shall be ventilated by means of the exhaust system of the ventilation equipment or by other exhaust systems